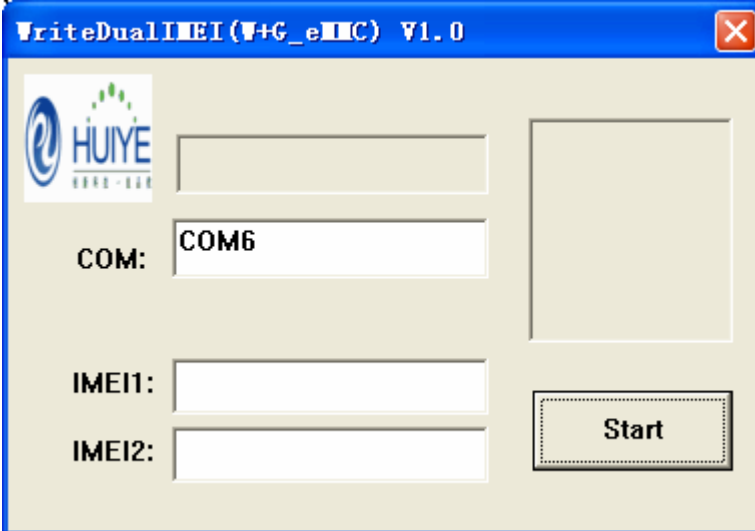


1. Please run "Setup.exe" driver file to install the latest USB Drivers;
2. Please input #*20110606# number in dial interface, and then select "Test Switch" menu, firstly, you should select "ON" button switch phone to test mode, of course, if the default setting is "ON", you need not operate this step.
3. Connect phone to computer by USB cable. Run the "WriteDualIMEI(W+G_eMMC).exe", then input two IMEI numbers in "IMEI1" and "IMEI2", the IMEI number should be 15 digits number. Finally, you just press "Start" button, you will see the "PASS" indication, then the IMEI numbers have been written successfully, you can reset phone and input #*06# to check whether IMEI numbers are correct or not.



WriteDualIMEI(W+G_eMMC) V1.0

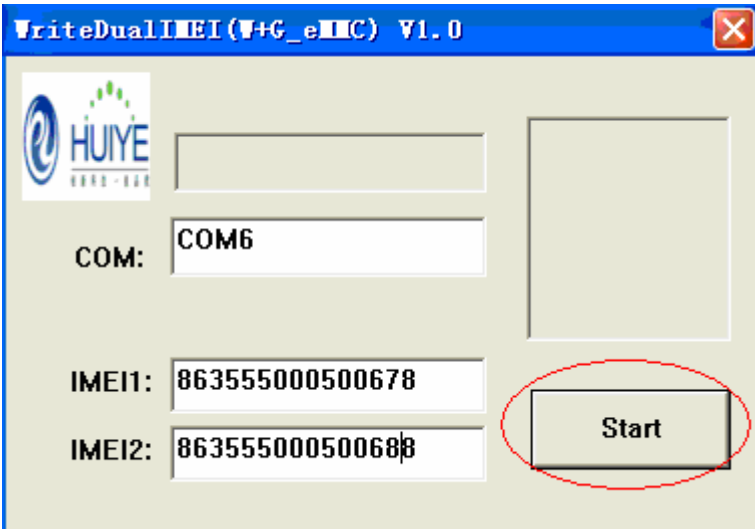
HUIYE

COM: COM6

IMEI1:

IMEI2:

Start



WriteDualIMEI(W+G_eMMC) V1.0

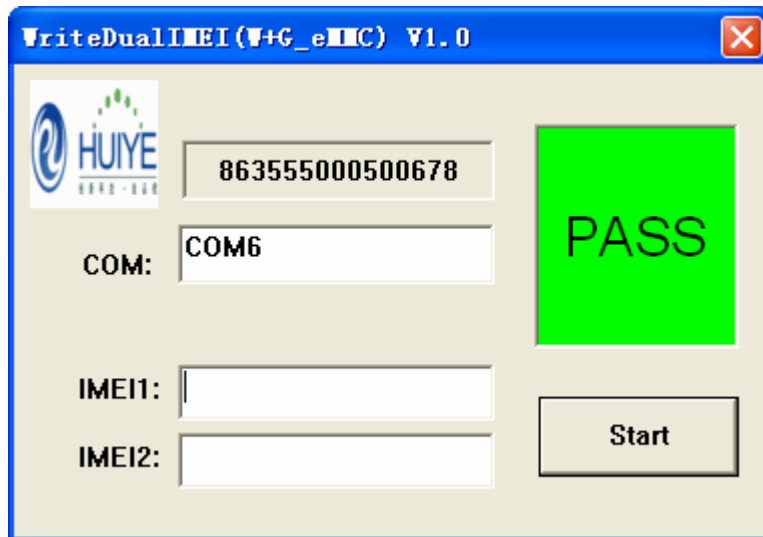
HUIYE

COM: COM6

IMEI1: 863555000500678

IMEI2: 863555000500688

Start



4. When IMEI numbers are written completed, please input `#*20110606#` number in dial interface gain, and then select “Test Switch” menu, you should select “OFF” button switch phone to user mode.